



*Flexible Glass Systems*

*Single Glass High Sliding Systems*

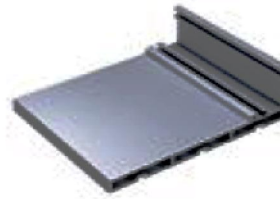
[www.icconium.com](http://www.icconium.com)

ICON-22

## Single Glass Low Sliding Systems



**ICON-22 101**  
Description :  
**3 Rails Bottom Profile**  
Unit : m  
Color Option :  
**Anodised Grey/Ral Color**



**ICON-20 106**  
Description :  
**5 Rails Side Profile**  
Unit : m  
Color Option :  
**Anodised Grey/  
Ral Color**



**ICON-20 102**  
Description :  
**3 Rails Upper Profile**  
Unit : m  
Color Option :  
**Anodised Grey/Ral Color**



**ICON-20 107**  
Description :  
**U' Side Profile**  
Unit : m  
Color Option :  
**Anodised Grey/  
Ral Color**



**ICON-20 103**  
Description :  
**3 Rails Side Profile**  
Unit : m  
Color Option :  
**Anodised Grey /Ral Color**



**ICON-22 108**  
Description :  
**10 mm Panel Profile**  
Unit : m  
Color Option :  
**Anodised Grey/  
Ral Color**



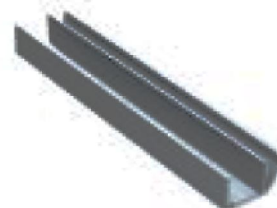
**ICON-22 104**  
Description :  
**5 Rails Bottom Profile**  
Unit : m  
Color Option :  
**Anodised Grey/Ral Color**



**ICON-20 109**  
Description :  
**10 mm Aluminium  
Seal Profile (with Brush)**  
(with Brush)  
Unit : m  
Color Option :  
**Anodised Grey/  
Ral Color**



**ICON-20 105**  
Description :  
**5 Rails Upper Profile**  
Unit : m  
Color Option :  
**Anodised  
Grey/Ral Color**



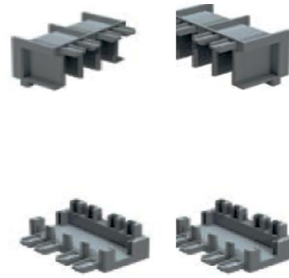
**ICON-20 110**  
Description :  
**10 mm Aluminium  
Seal Profile**  
Unit : m  
Color Option :  
**Anodised Grey/  
Ral Color**

## Single Glass Low Sliding Systems



### ICON-22 501

Description : **Wheel**  
Unit : **Pcs**



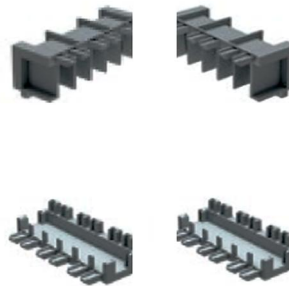
### ICON-22 505

Description :  
**3 Rail Frame**  
**All Plastic Corner**  
**Parts**  
Unit :  
**4 Pcs / Set**  
Color Option :  
**Black /Grey**



### ICON-20 502

Description : **Handle**  
Unit : **m**  
Color Option : **Stainless**



### ICON-22 506

Description :  
**5 Rail Frame**  
**All Plastic Corner**  
**Parts**  
Unit :  
**4 Pcs / Set**  
Color Option :  
**Black /Grey**



### ICON-22 503

Description :  
**Foot Lock Type 1**  
Unit : **Set**  
Color Option : **Black**



### ICON-22 504

Description :  
**Foot Lock Type 2**  
Unit : **Set**  
Color Option : **Black**



### ICON-22 507

Description :  
**Panel Cover-**  
**Metal Type 1**  
**(Right & Left)**  
Unit :  
**2 Pcs / Set**  
Color Option :  
**Black /Grey**

## Single Glass Low Sliding Systems



### ICON-22 508

Description :  
**Panel Cover-  
Metal Type 2**  
(Right & Left)  
Unit : **2 Pcs / Set**  
Color Option : **Grey / Raw**



### ICON-BR 01

Description :  
**Brush Seal Type 1**  
Unit : **m**



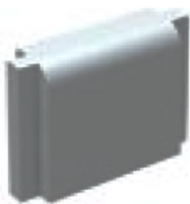
### ICON-20 508

Description :  
**Door Lock Key Set**  
(locking inside & outside)  
Unit : **Set**  
Color Option : **Standard**



### ICON-TP 01

Description :  
**Double Side  
Sticker Tape**  
Unit : **m**



### ICON-22 509

Description :  
Bottom Corner Parts Cover  
Unit : **2 Pcs**  
Color Option : **Black / Grey**



### ICON-PL 01

Description :  
**Polyurethane  
Adhesive**  
Unit : **Tube**

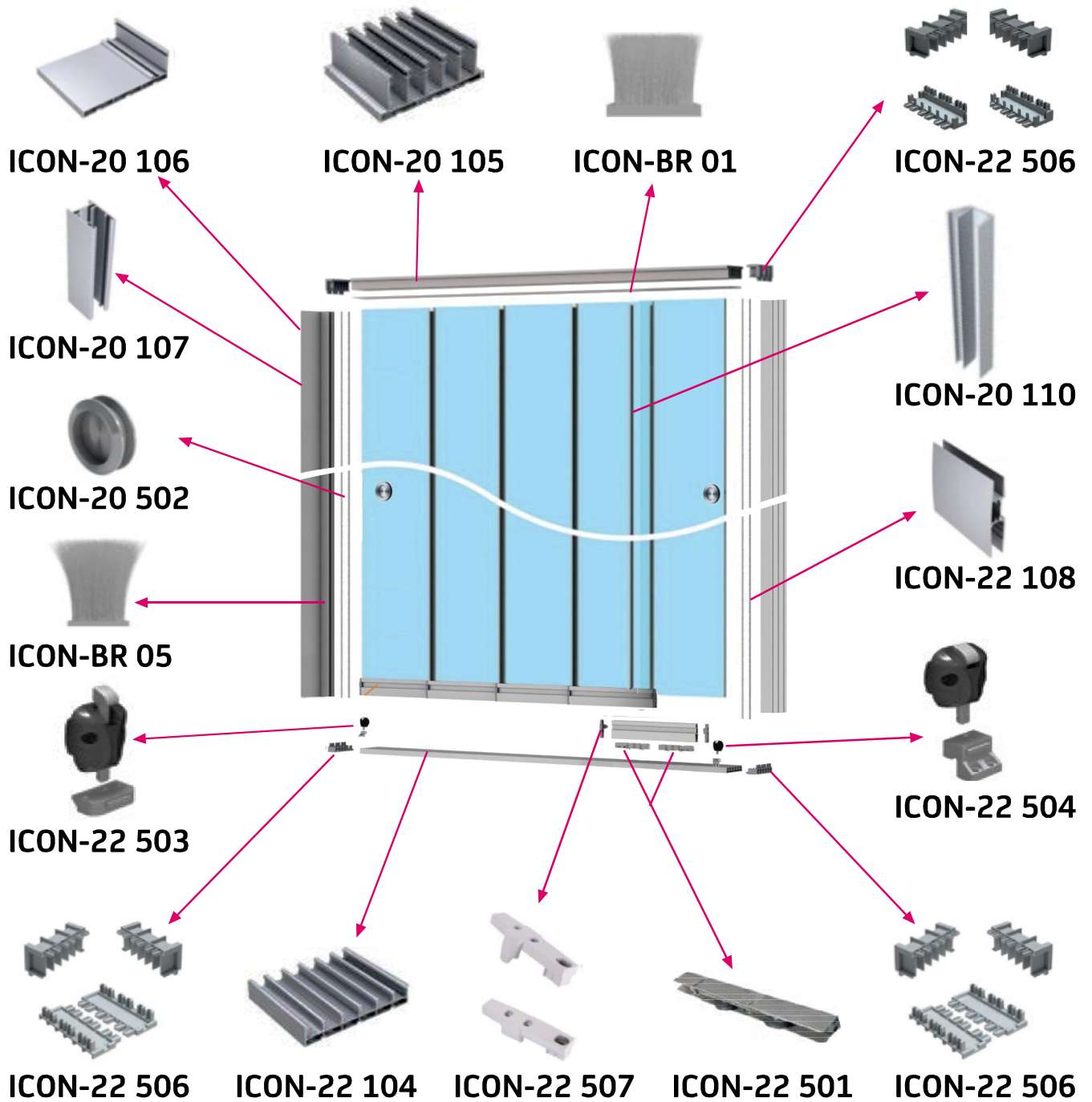


### ICON-BR 05

Description :  
**Brush Seal Type 5**  
Unit : **m**

# Fixed Glass Roof System

## Icon-22 Single Glass High Sliding System





*Flexible Glass Systems*



Musalla Baęları Mh. Kule Cd. No: 2 Apt No: 31 42060 Selçuklu/Konya/TURKIYE  
Phone: +90 332 408 3773 • Mobile: +90 552 385 54 10  
E-mail: furkan.ozdayi@icconium.com

[www.icconium.com](http://www.icconium.com)

