



Flexible Glass Systems



Single Glass Low Sliding Systems



www.icconium.com

ICON-21

Single Glass Low Sliding Systems



ICON-21 101

Description :
3 Rails Bottom Profile
Unit : m
Color Option : Ral Colors



ICON-20 106

Description :
5 Rails Side Profile
Unit : m
Color Option : Ral Colors



ICON-20 102

Description :
3 Rails Upper Profile
Unit : m
Color Option : Ral Colors



ICON-20 107

Description :
U' Side Profile
Unit : m
Color Option : Ral Colors



ICON-20 103

Description :
3 Rails Side Profile
Unit : m
Color Option : Ral Colors



ICON-21 108

Description :
10 mm Panel Profile
Unit : m
Color Option : Ral Colors



ICON-21 104

Description :
5 Rails Bottom Profile
Unit : m
Color Option : Ral Colors



ICON-20 109

Description :
10 mm Aluminium Seal Profile (with Brush)
Unit : m
Color Option : Ral Colors



ICON-20 105

Description :
5 Rails Upper Profile
Unit : m
Color Option : Ral Colors



ICON-20 110

Description :
10 mm Aluminium Seal Profile
Unit : m
Color Option : Ral Colors

Single Glass Low Sliding Systems



ICON-21 501

Description : **Wheel**
Unit : **Pcs**



ICON-20 502

Description : **Handle**
Unit : **m**
Color Option : **Stainless**



ICON-21 503

Description : **Foot Lock**
Unit : **Set**
Color Option : **Black**



ICON-21 504

Description :
3 Rail Frame
All Plastic Corner
Parts
Unit : **4 Pcs / Set**
Color Option : **Black /Grey**



ICON-21 505

Description :
5 Rail Frame
All Plastic Corner
Parts
Unit :
4 Pcs / Set
Color Option :
Black /Grey



ICON-21 506

Description :
Panel Cover-
Metal Type 1
(Right & Left)
Unit : **2 Pcs / Set**
Color Option : **Black /Grey**



ICON-21 507

Description :
Panel Cover-
Metal Type 1
(Right & Left)
Unit : **2 Pcs / Set**
Color Option : **Grey / Raw**



ICON-20 508

Description :
Door Lock Key Set
(locking inside & Outside)
Unit : **Set**
Color Option : **Standard**

Single Glass Low Sliding Systems



ICON-21 509

Description : **Door Lock Key Set** (locking inside)

Unit : **Set**

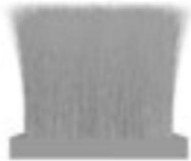
Color Option : **Standard**



ICON-BR 05

Description : **Brush Seal Type 5**

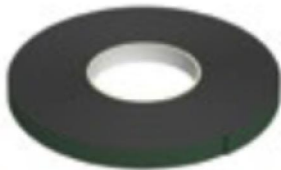
Unit : **m**



ICON-BR 01

Description : **Brush Seal Type 1**

Unit : **m**



ICON-TP 01

Description : **Double Side Sticker Tape**

Unit : **m**



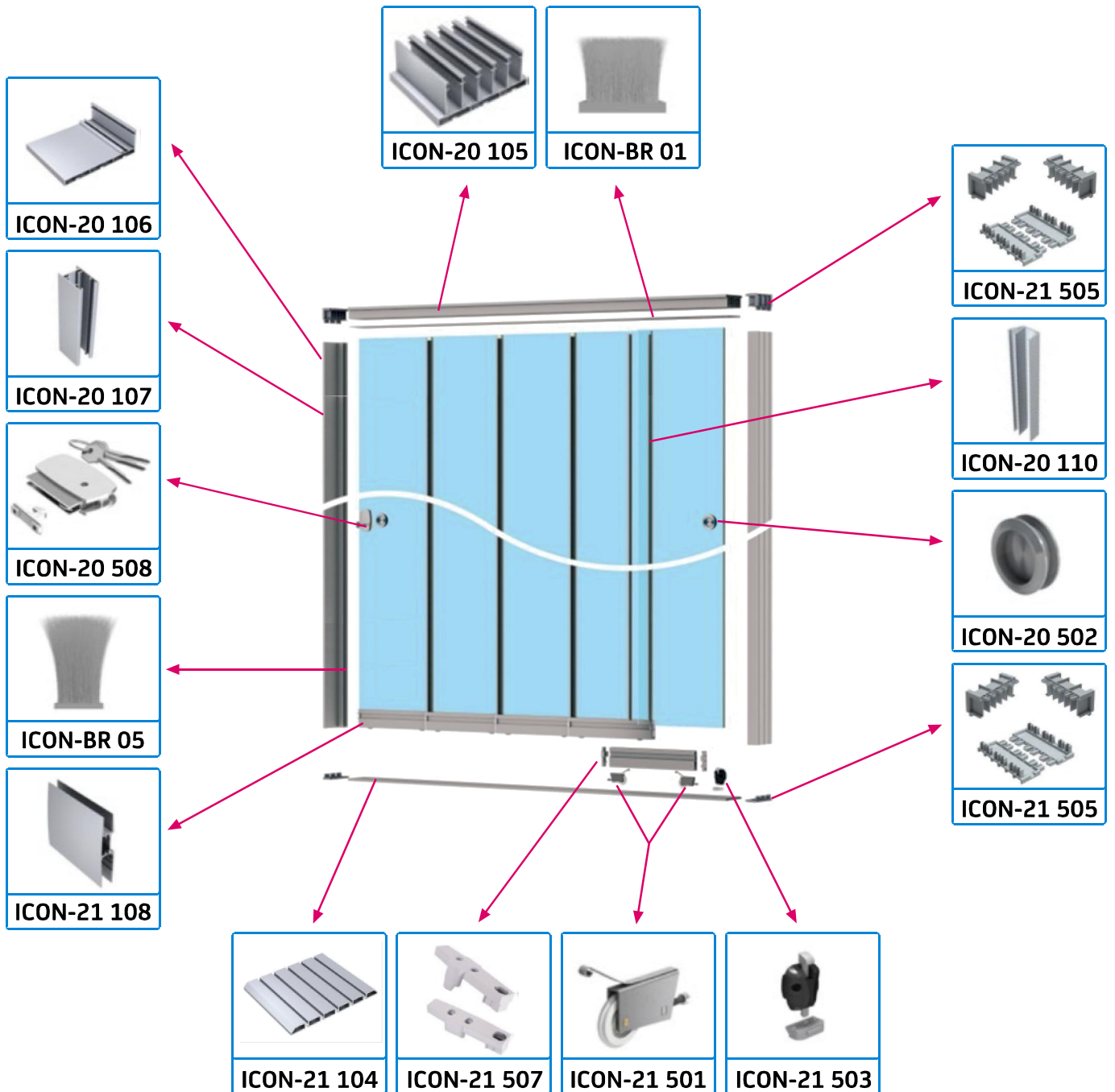
ICON-PL 01

Description : **Polyurethane Adhesive**

Unit : **Tube**

Fixed Glass Roof System

Icon-21 Single Glass Low Sliding System





Flexible Glass Systems



Musalla Baęları Mh. Kule Cd. No: 2 Apt No: 31 42060 Selçuklu/Konya/TURKIYE
Phone: +90 332 408 3773 • Mobile: +90 552 385 54 10
E-mail: furkan.ozdayi@icconium.com

www.icconium.com

